

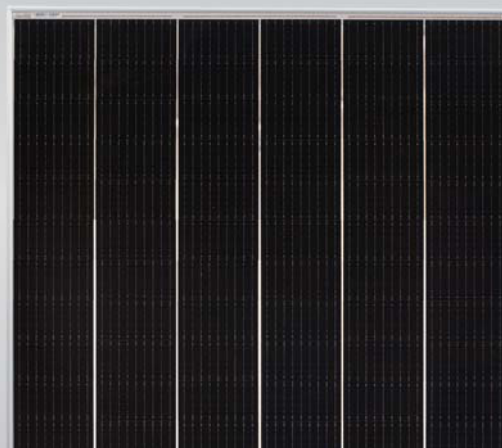
# Tiger Mono-facial 340-360 Watt

Tiling Ribbon (TR) Technology

Positive power tolerance of 0~+3%

ISO9001:2015, ISO14001:2015, ISO45001:2018  
certified factory

IEC61215, IEC61730 certified product



## KEY FEATURES



### TR technology + Half Cell

TR technology with Half cell aims to eliminate the cell gap to increase module efficiency (mono-facial up to 20.68%)



### 9BB instead of 5BB

9BB technology decreases the distance between bus bars and finger grid line which is benefit to power increase.



### Higher lifetime Power Yield

2% first year degradation,  
0.55% linear degradation



### Best Warranty

12 year product warranty,  
25 year linear power warranty



### Avoid debris, cracks and broken gate risk effectively

9BB technology using circular ribbon that could avoid debris, cracks and broken gate risk effectively



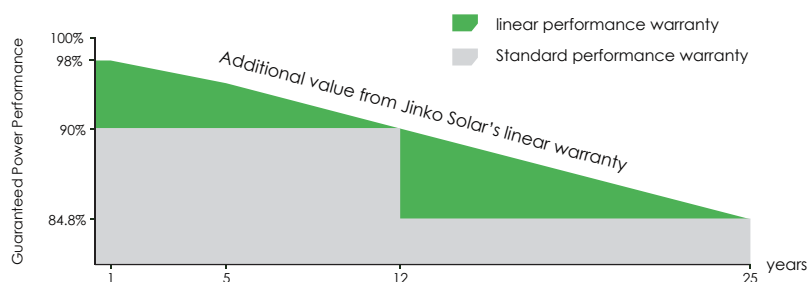
### Severe Weather Resilience

Certified to withstand: wind load (2400 Pascal) and snow load (5400 Pascal).

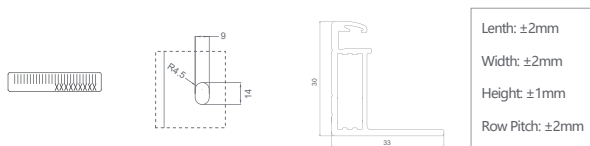
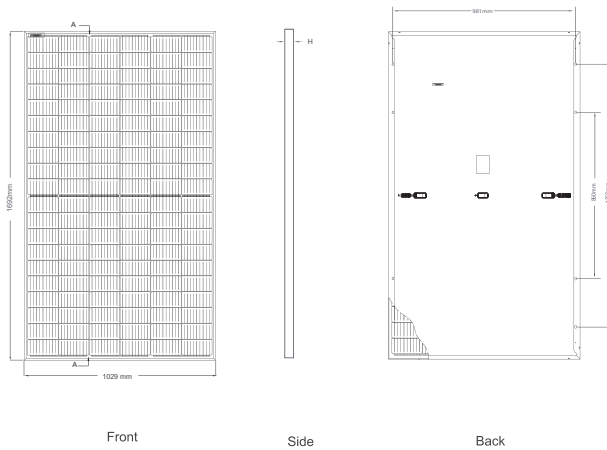


## LINEAR PERFORMANCE WARRANTY

12 Year Product Warranty 25 Year Linear Power Warranty  
0.55% Annual Degradation Over 25 years



## Engineering Drawings

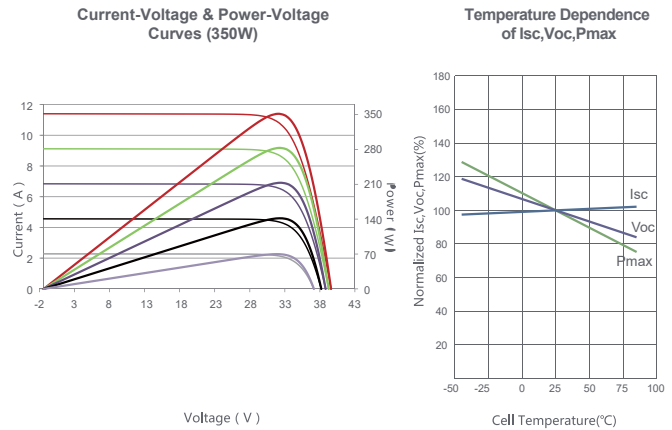


## Packaging Configuration

( Two pallets = One stack )

35pcs/pallets, 70pcs/stack, 910pcs/ 40'HQ Container

## Electrical Performance & Temperature Dependence



## Mechanical Characteristics

Cell Type	P type Mono-crystalline
No. of cells	120 (2×60)
Dimensions	1692×1029×30mm (66.61×40.51×1.18 inch)
Weight	19.3 kg (42.55 lbs)
Front Glass	3.2mm, Anti-Reflection Coating, High Transmission, Low Iron, Tempered Glass
Frame	Anodized Aluminium Alloy
Junction Box	IP67 Rated
Output Cables	TUV 1×4.0mm <sup>2</sup> (+): 290mm, (-): 145 mm or Customized Length

## SPECIFICATIONS

Module Type	JKM340M-6TL3		JKM345M-6TL3		JKM350M-6TL3		JKM355M-6TL3		JKM360M-6TL3	
	JKM340M-6TL3-V		JKM345M-6TL3-V		JKM350M-6TL3-V		JKM355M-6TL3-V		JKM360M-6TL3-V	
	STC	NOCT	STC	NOCT	STC	NOCT	STC	NOCT	STC	NOCT
Maximum Power (Pmax)	340Wp	253Wp	345Wp	257Wp	350Wp	260Wp	355Wp	264Wp	360Wp	268Wp
Maximum Power Voltage (Vmp)	32.85V	30.04V	32.95V	30.16V	33.05V	30.24V	33.15V	30.36V	33.24V	30.47V
Maximum Power Current (Imp)	10.35A	8.42A	10.47A	8.51A	10.59A	8.61A	10.71A	8.70A	10.83A	8.79A
Open-circuit Voltage (Voc)	39.51V	37.29V	39.61V	37.39V	39.71V	37.48V	39.81V	37.57V	39.91V	37.67V
Short-circuit Current (Isc)	11.16A	9.01A	11.28A	9.11A	11.40A	9.21A	11.52A	9.30A	11.64A	9.40A
Module Efficiency STC (%)	19.53%		19.82%		20.10%		20.39%		20.68%	
Operating Temperature(°C)	-40°C~+85°C									
Maximum system voltage	1000/1500VDC (IEC)									
Maximum series fuse rating	20A									
Power tolerance	0~+3%									
Temperature coefficients of Pmax	-0.35%/°C									
Temperature coefficients of Voc	-0.28%/°C									
Temperature coefficients of Isc	0.048%/°C									
Nominal operating cell temperature (NOCT)	45±2°C									

\* STC: Irradiance 1000W/m<sup>2</sup> Cell Temperature 25°C

AM=1.5

NOCT: Irradiance 800W/m<sup>2</sup> Ambient Temperature 20°C

AM=1.5

Wind Speed 1m/s

\* Power measurement tolerance:  $\pm 3\%$

The company reserves the final right for explanation on any of the information presented hereby. TR JKM340-360M-6TL3-(V)-D2-EN