

GSUN-BMB(-HV) SERIES 6 INCH 120 CELLS

325-340w

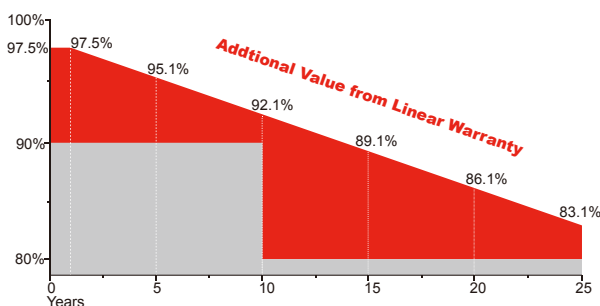
More Benefits

- Higher Durability and Reliability
- Lower internal current, lower mismatch loss
- Lower power degradation, more power yield, more returns
- Safety for fire risk(Class C tested in TÜV SÜD)
- Unique circuit design, better shading tolerance

Certifications



Warranty



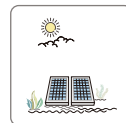
10
YEARS

Guarantee on product material and workmanship

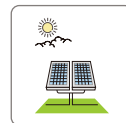
25
YEARS

linear power output warranty

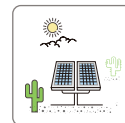
Perfect for Highly—reflective Project Sites



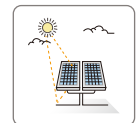
WATER



GRASSLAND

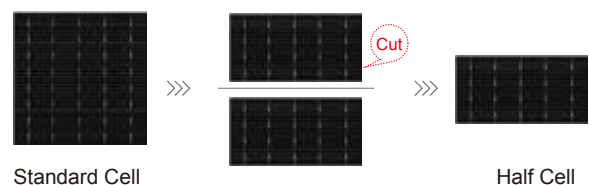


SANDY



WHITE PAINTED
GROUND

Less Internal Power Loss



The ribbon length of half-cell is shorter than normal cell. Calculated by Joule's law and Ohm' law, the power loss reduction is nearly 6%.

Partner Europe: PVM-Solar Production U.G.
Pappenheimstr. 11
80335 München GERMANY
Phone: +47 41415160

GSUN-(325-340W)-BMB
Electrical Characteristics

Module Type	GSUN-325-BMB GSUN-325-BMB-HV	GSUN-330-BMB GSUN-330-BMB-HV	GSUN-335-BMB GSUN-335-BMB-HV	GSUN-340-BMB GSUN-340-BMB-HV
	STC	STC	STC	STC
Maximum Power at STC (Pmp)	325	330	335	340
Open Circuit Voltage (Voc)	40.4	40.6	40.8	41.0
Short Circuit Current (Isc)	9.93	10.02	10.11	10.20
Maximum Power Voltage (Vmp)	34.0	34.2	34.4	34.6
Maximum Power Current (Imp)	9.42	9.51	9.60	9.69
Module Efficiency at STC(ηm)	18.90	19.19	19.49	19.78
Power Tolerance	(0,+4.99)			
Maximum System Voltage	1000 VDC / 1500 VDC			
Maximum Series Fuse Rating	20A			

STC: Irradiance 1000 W/m² module temperature 25°C AM=1.5;

Temperature Characteristics

Pmax Temperature Coefficient	-0.36 %/°C
Voc Temperature Coefficient	-0.28 %/°C
Isc Temperature Coefficient	+0.05 %/°C
Operating Temperature	-40 ~ +85 °C
Nominal Operating Cell Temperature (NOCT)	45±2 °C
Fire Rating	Class C

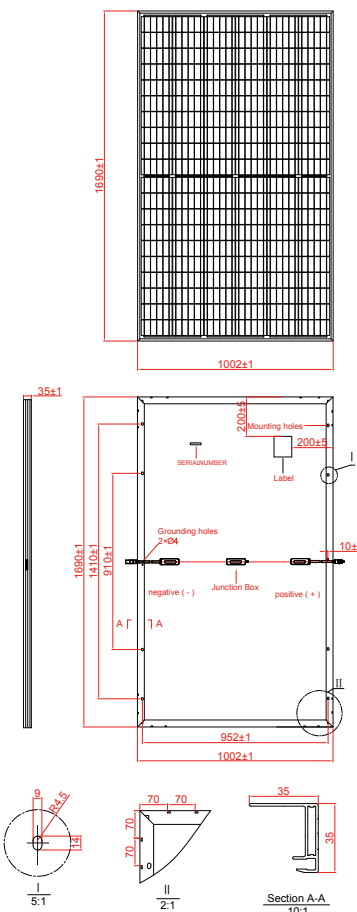
Mechanical Specifications

External Dimensions	1690 x 1002 x 35 mm
Weight	19.0kg
Solar Cells	PERC Mono crystalline 158.75 × 79.375 mm (120pcs)
Front Glass	3.2 mm AR coating tempered glass, low iron
Frame	Anodized aluminium alloy
Junction Box	IP68, 3 diodes
Output Cable	4.0 mm², Portrait: 255mm(+)/355mm(-); Landscape: 1200mm
Connector	TT02; PV-KST4/xy-UR; PV-KBT4/xy-UR;
Mechanical Load	5400 Pa

Packing Configuration

	1690 x 1002 x 35 mm		
Container	20'GP	40'GP	40'HQ
Pieces per Pallet	30	30	30+2*
Pallets per Container	12	26	26
Pieces per Container	360	780	832

* 30+2 pieces per pallet is the special package which only suits for container transport


I-V Curve
