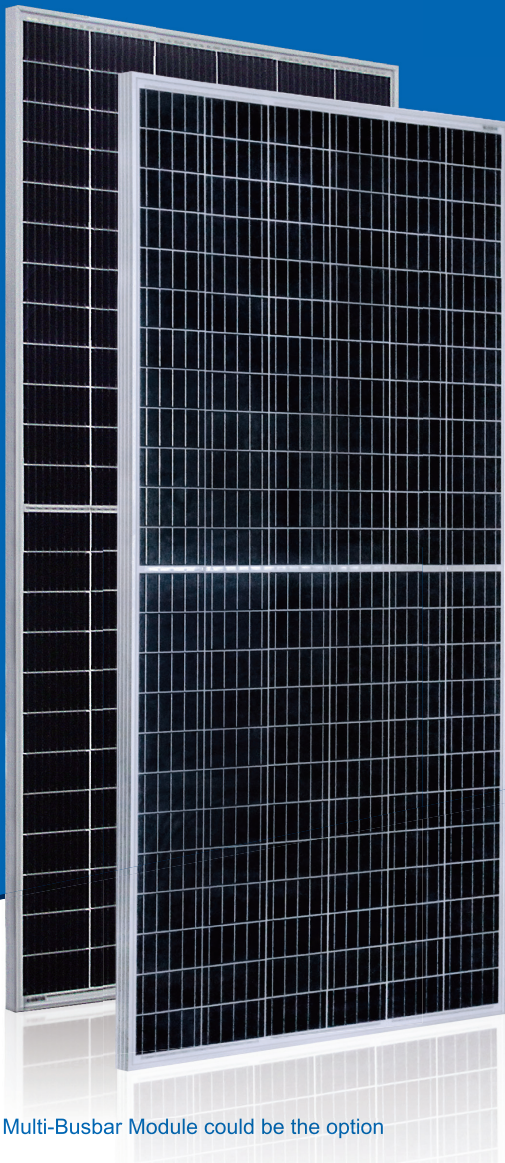


AstroTwins™

Enjoy the Energy of the Universe



Multi-Busbar Module could be the option

COMPREHENSIVE CERTIFICATES



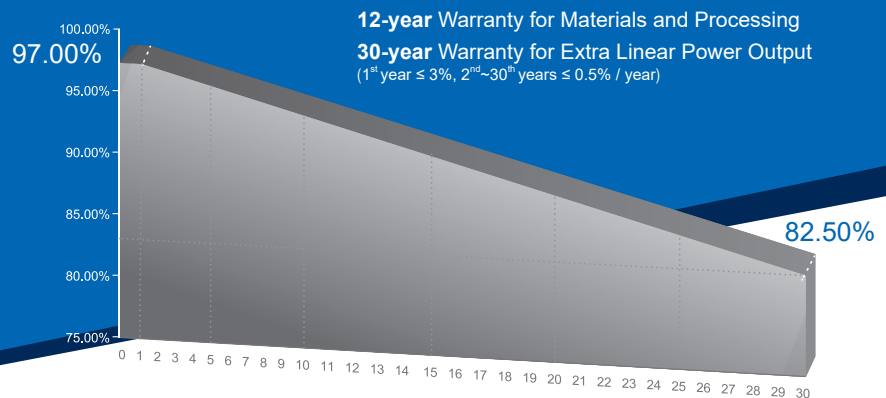
First solar company which passed the TUV Nord IEC/TS 62941 certification audit.

385W~405W

P-type Monocrystalline PV Module

CHSM72M(DG)/F-BH Series

CHSM72M(DG)/F-BH is bifacial module with white glazed glass



KEY FEATURES



ENHANCED FIRE PERFORMANCE

Fire Class A certified according to IEC standard.



EXCELLENT WEATHER RESISTANCE

Reduces the cell micro-crack and extended product warranty.



BIFACIAL POWER

The backside makes use of the reflected and scattered light from the surroundings, the modules can yield up to 5%~30% power more, depending on the albedo.



REDUCE INTERNAL MISMATCH LOSS

Reduces mismatch loss and improves output.



APPLICABLE FOR MULTI DIFFERENT ENVIRONMENTS

The wide range of applications, such as BIPV, vertical installation, snow area, high humidity area and strong sandstorm area, etc.



SNAIL TRAIL RESISTANCE

Reduces the probability of snail trails with zero water vapor transmittance.



FRAMED DOUBLE GLASS STRUCTURE

Similar to conventional modules design, better correspond with installation requirements in current market.

Preliminary
Specially Designeg for Nextracker Solution



ASTRONERGY
A CHNT COMPANY

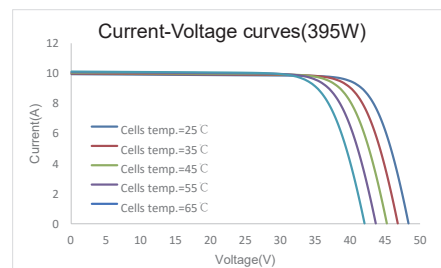
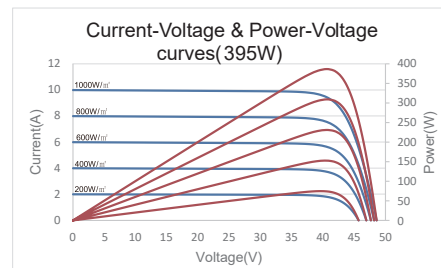
ELECTRICAL SPECIFICATIONS

Power rating (front)	385 Wp		390 Wp		395 Wp		400 Wp		405 Wp	
Testing Condition	Front	Back	Front	Back	Front	Back	Front	Back	Front	Back
STC rated output (P_{mpp}/Wp)*	385	253	390	256	395	259	400	263	405	266
Rated voltage (V_{mpp}/V) at STC	39.98	40.49	40.21	40.72	40.44	40.95	40.67	41.18	40.89	41.41
Rated current (I_{mpp}/A) at STC	9.63	6.24	9.70	6.29	9.77	6.34	9.84	6.38	9.91	6.43
Open circuit voltage (V_{oc}/V) at STC	47.70	46.29	47.88	46.47	48.06	46.64	48.24	46.82	48.42	46.99
Short circuit current (I_{sc}/A) at STC	10.06	6.57	10.14	6.62	10.22	6.67	10.30	6.72	10.38	6.78
Module efficiency	18.7%	12.3%	18.9%	12.4%	19.2%	12.6%	19.4%	12.8%	19.7%	12.9%
Temperature coefficient (P_{mpp})	- 0.3528%/°C									
Temperature coefficient (I_{sc})	+0.0400%/°C									
Temperature coefficient (V_{oc})	- 0.2769%/°C									
Normal operating cell temperature (NOCT)	44±2°C									
Maximum system voltage (IEC/UL)	1500V _{DC}									
Number of diodes	3									
Junction box IP rating	IP 68									
Maximum series fuse rating	20 A									

* Measurement tolerance +/- 3%

STC: Irradiance 1000W/m², Cell Temperature 25°C, AM=1.5

CURVE



ELECTRICAL SPECIFICATIONS (Integrated power)

P_{mpp} gain	P_{mpp}	V_{mpp}	I_{mpp}	V_{oc}	I_{sc}
5%	415 Wp	40.44 V	10.26 A	48.06 V	10.73 A
10%	435 Wp	40.44 V	10.74 A	48.06 V	11.24 A
15%	454 Wp	40.34 V	11.26 A	48.16 V	11.75 A
20%	474 Wp	40.34 V	11.75 A	48.16 V	12.26 A
25%	494 Wp	40.34 V	12.24 A	48.16 V	12.78 A

Measurement tolerance +/- 3%

Electrical characteristics with different rear power gain (reference to 395W)

MECHANICAL SPECIFICATIONS

Outer dimensions (L x W x H)	2038 x 1010 x 30 mm 80.24 x 39.76 x 1.18 in
Module composition	Glass / POE / Glass
Front glass thickness	2.5 mm / 0.098 in
Cable length (IEC/UL)	Portrait: 350 mm (13.78 in) Landscape: 1200 mm (47.24 in)
Cable diameter (IEC/UL)	4 mm ² / 12 AWG
① Maximum mechanical test load	1800 Pa (front) / 1800 Pa (back)
Fire performance (IEC/UL)	Class A (IEC) or Type 3 (UL)
Connector type (IEC/UL)	MC4 compatible

① Refer to Astronergy crystalline installation manual or contact technical department.
Maximum Mechanical Test Load=1.5×Maximum Mechanical Design Load.

PACKING SPECIFICATIONS

① Weight (module only)	31.4 kg / 69.23 lbs
② Packing unit	36 pcs / box
Weight of packing unit (for 40'HQ container)	1177 kg / 2595 lbs
Number of modules per 40'HQ container	792 pcs

① Tolerance +/- 1.0kg

② Subject to sales contract

MODULE DIMENSION DETAILS

