

Reference of ANTIPID in Wipperdorf Project

Region	Country	Germany
	City	Wipperdorf
	Address	99752 Wipperdorf
Structure	Capacity	3877.92 KWp(DC)
	Label Power of Module	Poly module 240Wp
	Qty of Module in One String	22
	Qty of Inverter	124
	Model of Inverter(with operation manual)	27.6KW
	Layout of the Plant	Figure1 , Figure2
Other	Operation Year	13.06.2013

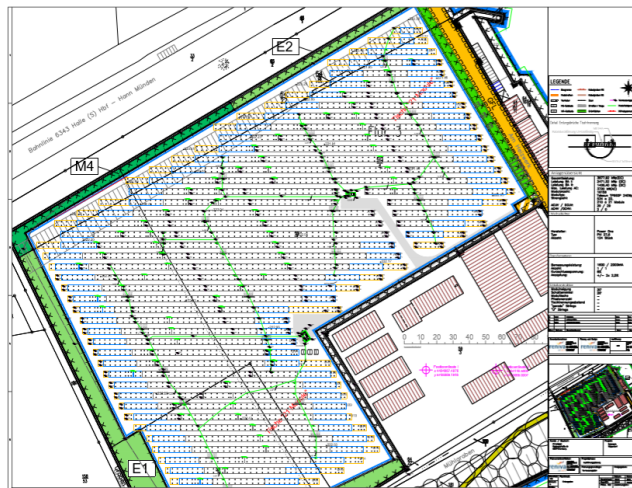


Figure 1



Figure 2

ANTIPID installed on site



Figure 3



Figure 4

Results

a. The yield increased percentage of the first 59 inverters connected with ANTIPID for two weeks (the first installation of ANTIPID date: 16th of July, 2019)

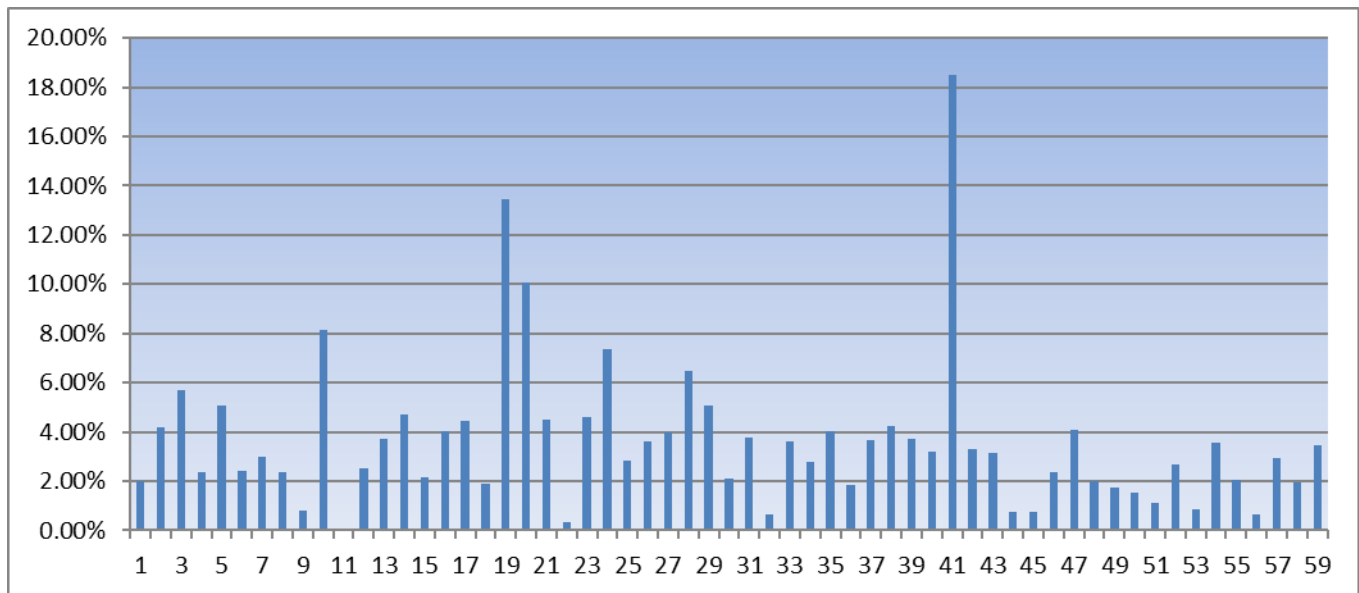


Chart 1

b. Monthly Performance Ratio rising after first and second installation(the second installation of ANTIPID date: 8th of August, 2019)

	Jan	Feb	Mar	Apr	May	Jun	Jul	Aug	Sep	Oct	Nov	Dec
PR in 2018							68.35%	69.27%	69.38%	63.31%	58.57%	52.40%
PR in 2019	54.30%	68.83%	73.02%	74.46%	71.92%	68.59%	70.36%	71.95%	76.71%	76.16%	69.69%	61.83%
PR rising from the same month of 2018							2.94%	3.87%	10.57%	20.30%	18.99%	18.00%
PR in 2020	66.30%	78.96%	85.77%	84.95%								
PR rising from the same month of 2019	22.10%	14.72%	17.46%	14.09%								

Obviously since October of 2019, the monthly PR has risen about 15% higher than it in the same month of the previous year when the ANTIPIDs were not installed.