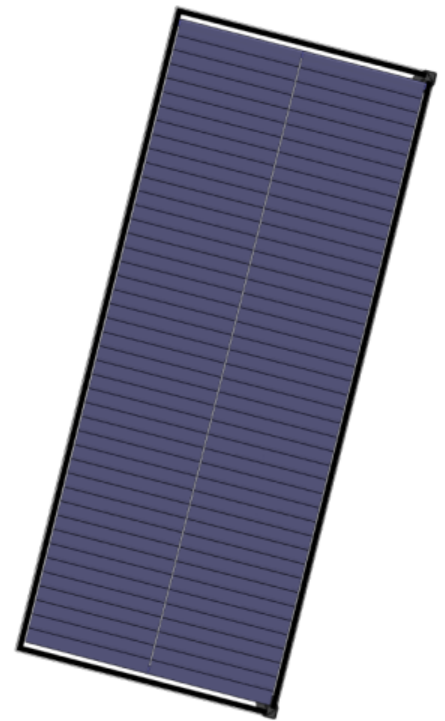


Frameless Double Glass Module

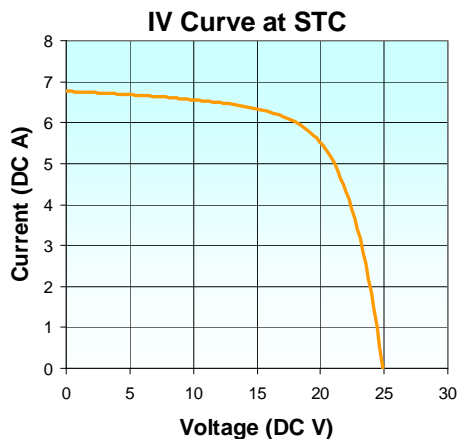
Key Features

- Designed for large scale, low cost installations
- Durable glass/glass construction ensures long lifetime in harsh environments
- Corner junction box design minimizes wiring and BOS costs
- Bypass diodes reduce losses due to shading
- UL 1703, IEC 61646 and IEC 61730 Certifications
- 5/10/25 year power warranty (please see warranty for detail)



Electrical Performance*	MR-107			
	Article 1	Article 2	Article 3	Article 1,2,3
Max Peak Power – P_{MPP}	117.7 W	112.5 W	107.5W	117.7 W
Min Peak Power – P_{MPP}	112.5 W	107.5W	102.5 W	102.5 W
Nominal Peak Power – P_{MPP}	115.1 W	110.0 W	105.0 W	110.1 W
Power Tolerance – $[+/-\%]$	2.3%	2.3%	2.4%	7.0%
Maximum Power Voltage – V_{MPP}	20.1 V	19.3 V	18.6 V	19.3 V
Maximum Power Current – I_{MPP}	5.73 A	5.70 A	5.66 A	5.70 A
Open Circuit Voltage – V_{OC}	25.5 V	24.9 V	24.3 V	24.9 V
Short Circuit Current – I_{SC}	6.81 A	6.84 A	6.86 A	6.84 A
Maximum Series Fuse Rating	25 A			
Maximum System Voltage (US/IEC)	600V /1000V			

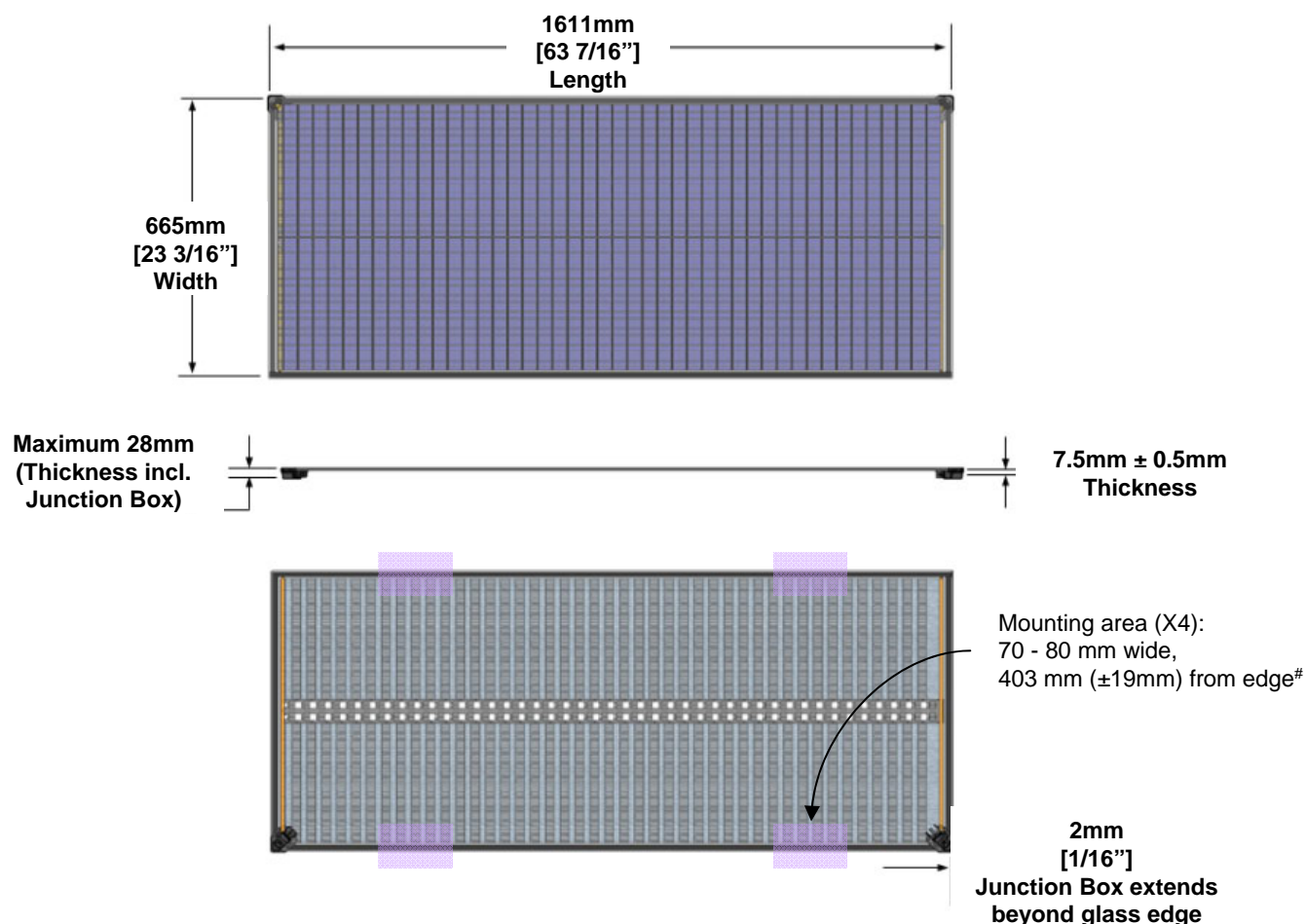
* At Standard Test Conditions: 1000 W/m², 25°C cell temperature, AM 1.5 spectrum



Thermal Characteristics	
Nominal Operating Cell Temperature	49°C
Temperature Coefficient of Power	-0.45%/°C
Temperature Coefficient of V_{OC}	-0.36%/°C

Physical and Mechanical Specifications	
Length	1611 mm
Width	665 mm
Depth	7.5 mm (28 mm including junction box)
Weight	18 kg
Junction Box / Output Terminal Type	2 corner connection boxes MC4 Locking Connector
Frame	None
Cell Type	Copper Indium Gallium Diselenide (CIGS)
Static Load	5400 N/m ²
Warranty Term	5/10/25 year power output, 5 year workmanship*
Certifications	UL1703, IEC 61646, IEC 61730

* Please see full warranty for details



MiaSolé will evaluate alternate clamping solutions upon customer request