

LONGI EcoLife

LR7-54HVBB

470~485M (238 W/m^2)

THE **smarter**
AWARD 



**Leading
Black Module
Efficiency**

High
Efficiency



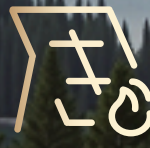
**70%
Output Maintained
when Shaded**

Anti
Shading



**High
Corrosion
Resistance**

POE Film



High energy yield
Earlier and longer power
generation
More power from limited roof
space

POE Film



23.8%
MAX MODULE
EFFICIENCY

0~3%
POWER
TOLERANCE

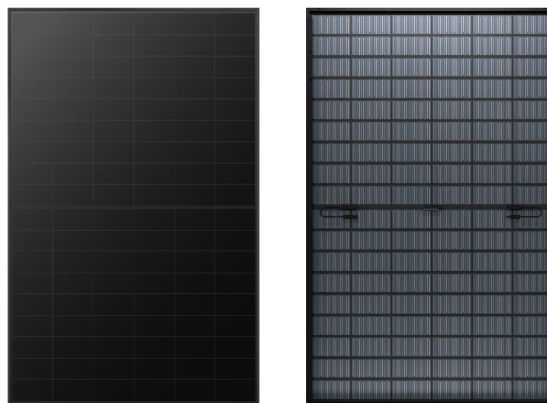
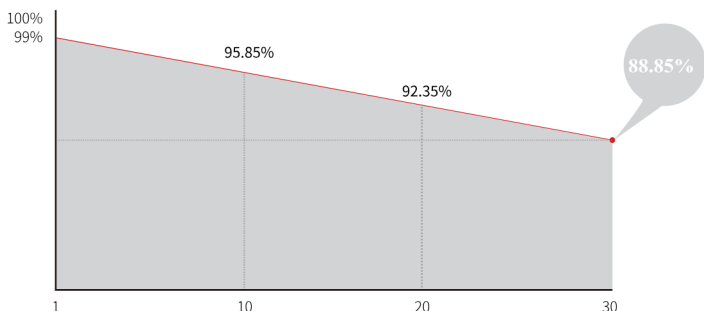
1%
FIRST YEAR
POWER DEGRADATION

0.35%
YEAR 2-30
POWER DEGRADATION

BC-CELL
LOWER OPERATING
TEMPERATURE

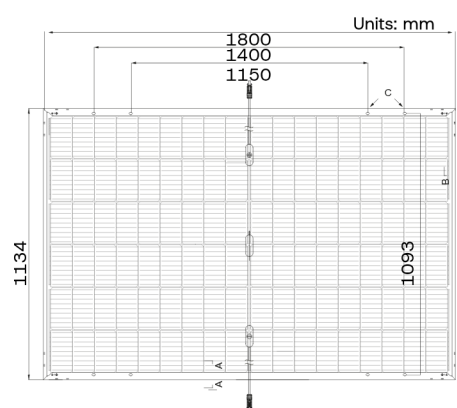
Additional Value

30 Year Power Warranty

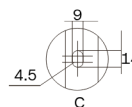


Mechanical Parameters

Cell Orientation	108 (6×18)
Junction Box	IP68
Output Cable	4mm ² , +400, -200mm/±12 00mm length can be customized
Glass	Dual glass, 2.0mm coated tempered glass+1.6mm semi-tempered glass
Frame	Black anodized aluminum alloy frame
Weight	23.5
Dimension	1800×1134×30mm
Packaging	36pcs per pallet / 216pcs per 20' GP / 864pcs per 40' HC



Tolerance:
Length: ±2mm
Width: ±2mm



Electrical Characteristics

STC : AM1.5 1000W/m² 25°C

NOCT : AM1.5 800W/m² 20°C 1m/s

Test uncertainty for P_{max} ±3%

Module Type	LR7-54HVBB-470M	LR7-54HVBB-475M	LR7-54HVBB-480M	LR7-54HVBB-485M
Testing Condition	STC	STC	STC	STC
Maximum Power (P _{max} /W)	470.0	475.0	480.0	485.0
Open Circuit Voltage (V _{oc} /V)	40.31	40.42	40.53	40.64
Short Circuit Current (I _{sc} /A)	14.78	14.88	14.98	15.08
Voltage at Maximum Power (V _{mp} /V)	33.29	33.4	33.51	33.62
Current at Maximum Power (I _{mp} /A)	14.13	14.23	14.33	14.43
Module Efficiency(%)	23.0	23.3	23.5	23.8

Electrical characteristics with different rear side power gain

P _{max} /W	V _{oc} /V	I _{sc} /A	V _{mp} /V	I _{mp} /A	P _{max} gain
494.0	40.31	15.52	33.29	14.82	0.05
517.0	40.31	16.26	33.29	15.53	0.1
541.0	40.41	17.0	33.39	16.19	0.15
564.0	40.41	17.74	33.39	16.89	0.2
588.0	40.41	18.48	33.39	17.6	0.25

Operating Parameters

Operational Temperature	-40°C ~ +85°C
Power Output Tolerance	0 ~ 3%
Maximum System Voltage	DC1500V (IEC)
Maximum Series Fuse Rating	25A
Nominal Operating Cell Temperature	45±2°C
Protection Class	Class II
Fire Rating	IEC Class C

Mechanical Loading

Front Side Maximum Static Loading	5400Pa
Rear Side Maximum Static Loading	2400Pa
Hailstone Test	25mm Hailstone at the speed of 23m/s

Temperature Ratings (STC)

Temperature Coefficient of I _{sc}	+0.050%/°C
Temperature Coefficient of V _{oc}	-0.200%/°C
Temperature Coefficient of P _{max}	-0.260%/°C