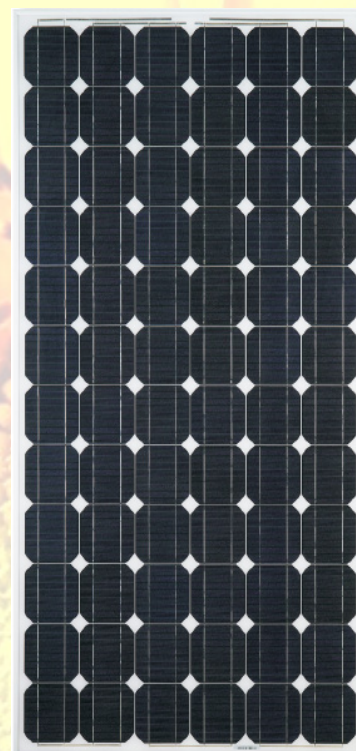




## AS-5M Amerisolar

Amerisolar’s photovoltaic modules are designed for large electrical power requirements. With a 25 year warranty, AS-5M offers high-powered, reliable performance for solar projects, both on- and off-grid.

- Solar Cell: High efficiency solar cells ensure high performance of solar module and create maximum power output.
- Low iron tempered glass: Anti-reflecting coating and high transmission rate glass increase the power output and mechanical strength of solar module.
- Aluminum frame: Without screw, corner connection. 10 holes on the frame can be installed easily.
- Superior Junction box: Multi function junction box with water proof capabilities.
- Long lifespan:  $\geq 25$ Years.
- Tolerance:  $\pm 3\%$ .
- Good performance of preventing from atrocious weather such as wind and hails.
- Resisting moisture and etching effectively, not effect by geology.
- The certificate issued by international authority: CE, TUV, IEC.



### Electrical characteristics

$P_{max}$ ,  $V_{oc}$ ,  $I_{sc}$ ,  $V_{mp}$  and  $I_{mp}$  at STC (1000W/m<sup>2</sup>, 25 ± 2°C, AM 1.5);

Maximum Power ( $P_{max}$ )	160W	165W	170W	175W	180W	185W
Open Circuit Voltage ( $V_{oc}$ )	42.55V	42.59V	43.35V	43.39V	43.44V	43.47V
Short Circuit Current ( $I_{sc}$ )	4.79A	4.92A	4.99A	5.12A	5.27A	5.4A
Maximum Power Voltage ( $V_{mp}$ )	35.51V	35.54V	36.18V	36.21V	36.25V	36.28V
Maximum Power Current ( $I_{mp}$ )	4.51A	4.64A	4.7A	4.83A	4.97A	5.1A
Module Efficiency (%)	12.54	12.93	13.32	13.71	14.10	14.49

### Temperature Coefficients

Temperature Coefficients of $P_m$	-0.47 %/°C
Temperature Coefficients of $V_{oc}$	-0.38 %/°C
Temperature Coefficients of $I_{sc}$	+0.04 %/°C
Temperature Coefficients of $I_m$	+0.04 %/°C
Temperature Coefficients of $V_m$	-0.38 %/°C

### Absolute Maximum Limits

Maximum System Voltage	1000V DC
Module Operating Temperature	-40°C to +85°C
Noct (DEGC.)	45°C±3°C

### WARRANTY

- Product: 5 years
- Power Output:  
90%----10 years  
80%----25 years



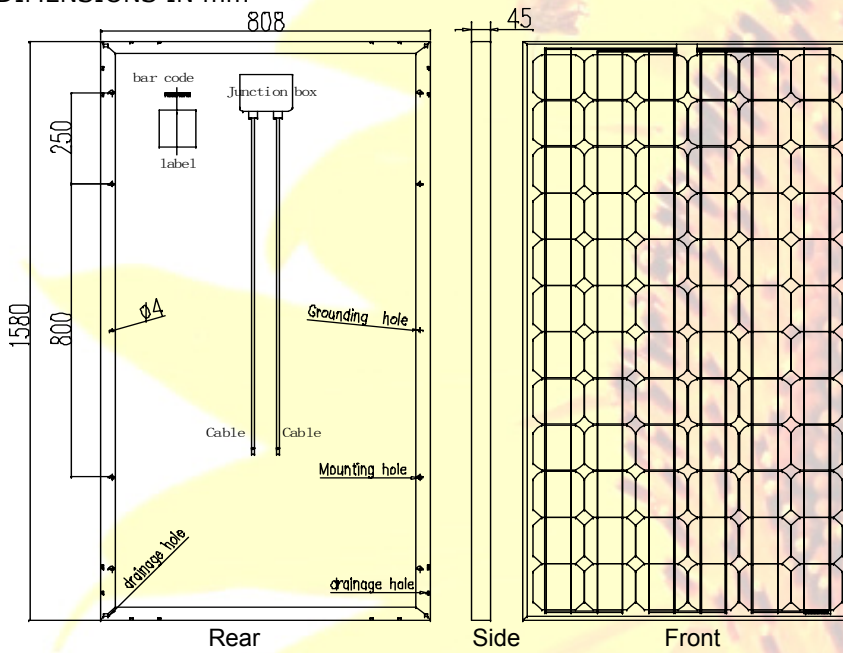
Passionately  
committed to  
delivering innovative  
energy solution

**Mechanical characteristics**

Cell Technology	125mmx125mm [4.92inx4.92in]	Mono-crystal silicon
Number of Cells (Pcs)	72 (6x12)	
Dimensions	1580mmx808mmx45mm	
Weight	15.5kg	
Frame	Aluminium-alloy	
Length of Cables (mm)	900mm	
Allowable Hail Load	Steel ball fall down from 1m height	
Surface Maximum Load Capacity	60m/s(540kg/m <sup>2</sup> )	

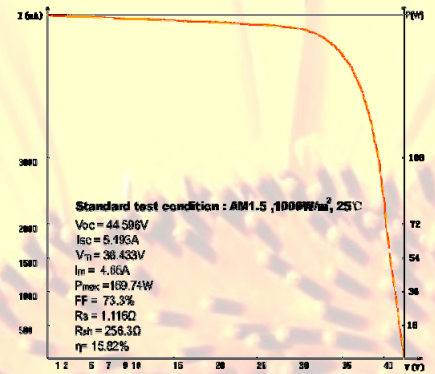
**Basic Dimensions**

ALL DIMENSIONS IN mm

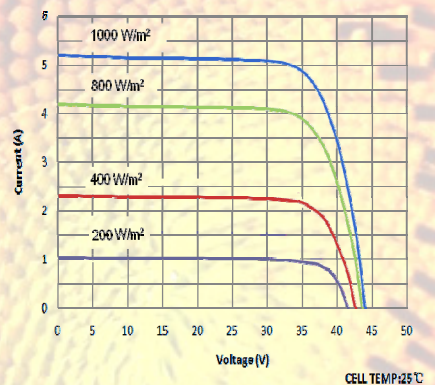


1. Front: tempered solar glass 3.2mm
2. EVA
3. 72 high efficiency solar cells  
125mm X 125mm
4. EVA
5. Rear: laminate (weatherproof and waterproof)

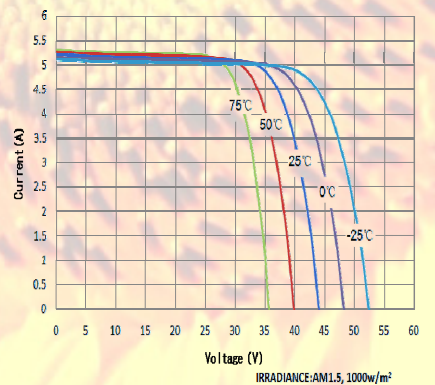
**I-V curves**



Module at STC



Various Irradiance Levels



Various Temperatures

**Worldwide Energy and Manufacturing USA, Inc.**

408 N. Canal Street Unit A & B, South San Francisco, CA 94080

Tel : +1-650-794-9888

Fax : +1-650-794-9878

[Http://www.wwmusa.com](http://www.wwmusa.com)

E-mail : [solarsales@wwmusa.com](mailto:solarsales@wwmusa.com)