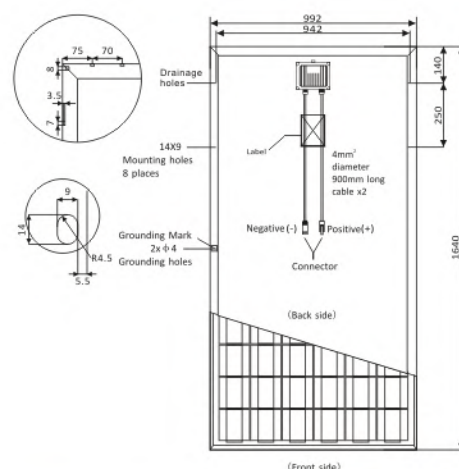


## POLY CRYSTALLINE MODULE 60x6"/200-250W



Qualified, IEC61215  
Qualified, IEC61730



### Electrical Characteristics

| Model   | Pm(Wp) | Tolerance | Vm(V) | Im(A) | Voc(V) | Isc(A) | η       |
|---------|--------|-----------|-------|-------|--------|--------|---------|
| SYP200S | 200W   | 0~+3%     | 28.60 | 7.00  | 36.50  | 7.65   | >12.30% |
| SYP210S | 210W   | 0~+3%     | 29.00 | 7.25  | 36.50  | 7.88   | >12.93% |
| SYP215S | 215W   | 0~+3%     | 29.20 | 7.37  | 36.70  | 7.92   | >13.23% |
| SYP220S | 220W   | 0~+3%     | 29.50 | 7.46  | 37.00  | 8.10   | >13.53% |
| SYP225S | 225W   | 0~+3%     | 29.60 | 7.61  | 37.00  | 8.14   | >13.85% |
| SYP230S | 230W   | 0~+3%     | 29.80 | 7.73  | 37.00  | 8.22   | >14.16% |
| SYP235S | 235W   | 0~+3%     | 30.00 | 7.84  | 37.10  | 8.28   | >14.46% |
| SYP240S | 240W   | 0~+3%     | 30.20 | 7.96  | 37.20  | 8.33   | >14.78% |
| SYP245S | 245W   | 0~+3%     | 30.30 | 8.09  | 37.30  | 8.34   | >15.07% |
| SYP250P | 250W   | 0~+3%     | 30.30 | 8.26  | 37.30  | 8.90   | >15.37% |

Valued at STC (AM 1.5, 1000W/m<sup>2</sup>, 25°C)

### Temperature Coefficients

|   |            |
|---|------------|
| Temperature Coefficient of VOC(β)         | -0.33%/°C  |
| Temperature Coefficient of ISC(α)         | +0.033%/°C |
| Temperature Coefficient of Pmax           | -0.39%/°C  |
| Nominal Operating Cell Temperature (NOCT) | 45±2°C     |

### Permissible Operating Conditions

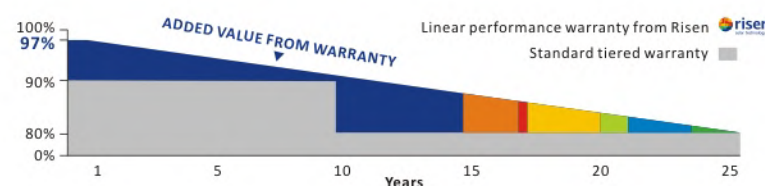
|                        |             |
|------------------------|-------------|
| Maximum system voltage | 1000VDC     |
| Operating temperature  | -40~+85°C   |
| Snow load              | Max 5400 Pa |
| Wind load              | Max 120km/h |

### Mechanical Characteristics

|                                       |                         |
|---------------------------------------|-------------------------|
| Number of poly crystalline solar cell | 60pcsx6"                |
| Aluminum frame, dimension             | 1640x992x50/45/40/35mm  |
| Glass thickness                       | 3.2mm                   |
| Weight                                | 20.5kg/20kg/19.5kg/19kg |
| Junction box                          | IP65                    |
| Module                                | IP65                    |
| Tolerance of Rating                   | 0~+3%                   |
| Number of bypass diodes               | 3                       |

### Warranty

10 years with 100% product warranty  
12 years 90% rated power output  
25 years 82% rated power output



## 200-250 Watt POLY-CRYSTALLINE SOLAR PANEL

### Excellent Quality

- >Automatic production and testing processes;
- >More than 18 IEC tests program in State-Level PV Laboratory of Risen;
- >Third party liability and quality insurance;
- >ISO9001,ISO14001 and OHSAS18001 management system.

### Easy for installation

- >Low weight, convenient format;
- >Horizontal and Vertical installation applicable;
- >Compatible with all standard rooftop and ground mounting systems.

### Maximum Yield

- >Only Positive tolerance assorted;
- >Photon test with TOP performance;
- >Averagely, installed projects actual power yield is 5% higher than theoretical yield.

