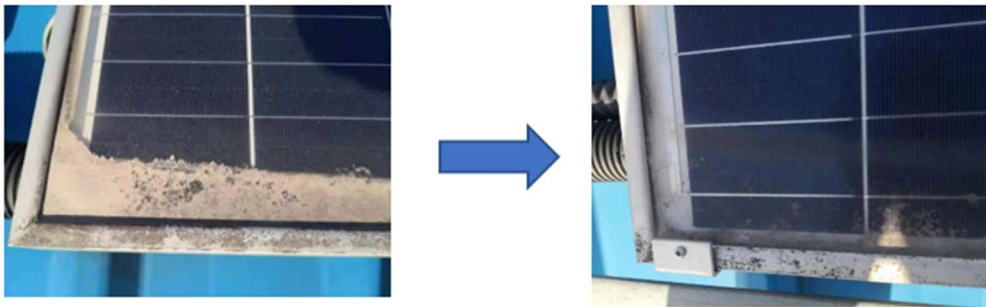


INTRODUCTION of MUD ERASER

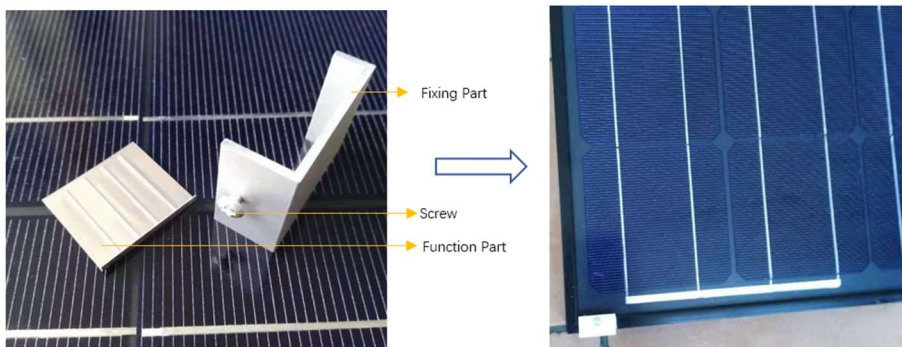
MUD ERASER is used to solve the mud accumulated as a triangle or strip above the bottom frame of the solar module



Such Mud builds up on the modules as the remaining water evaporates after a rain, especially if the modules are tilted below 15 degrees. Even if the modules are cleaned frequently, such mud triangle/strip will still grow up between cleanings.

Such mud will cause 1. yield loss; 2. hot spot in the mud area - reducing module lifetime and even firing risk in severe cases; 3. prone to PID issue.

MUD ERASER consists of a function part, a fixing part and a screw. The function part is made of soft, corrosion-resistant nano-metal material, which drains the residual water along with the soil that dissolves in the water after rain. Therefore, the mud can no longer accumulate on the module.



Advantages of MUD ERASER: 1. Effectively prevent such mud from growing; 2. Easy installing without professional skills or tools; 4. Lifetime more than 30 years.

Test Video: <https://www.youtube.com/watch?v=IFfYlsmb3Y4>