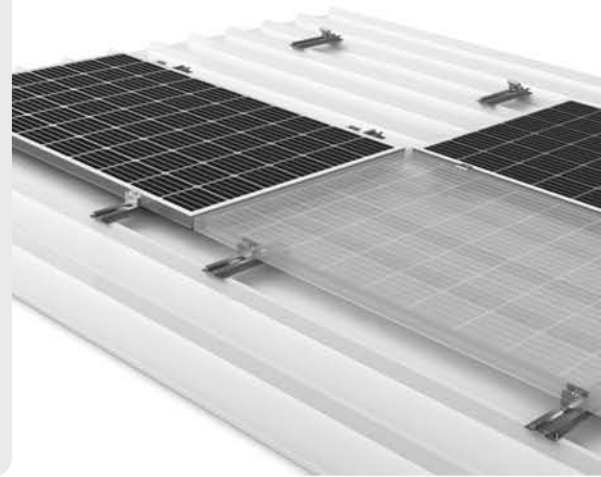




## Sandwich Panel Mounting System

### Low Cost - Optimum Solution

- ▶ ISOTRAP S is a low cost and easy install system optimized for trapezoidal sheet metal roofs
- ▶ It can be used in Landscape or in Portrait orientation layout
- ▶ Max. strength is obtained trough self drilling screw
- ▶ Send with special EPDM seal between profile and sandwich panel



# Components



## ISOTRAP S Profile

- ▶ Optimum strength obtained in portrait and landscape layouts
- ▶ Advantage of low cost
- ▶ Delivered with pre-assembled epdm seal

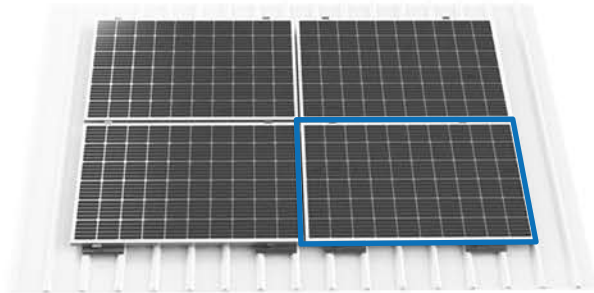
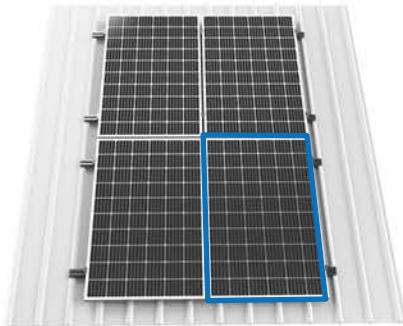
## Self drilling screw

- ▶ This self drilling screw with seal, drills a hole no bigger than nee
- ▶ Fastening without swarf
- ▶ Sealing warranty



## EasyClamp Middle + End Clamp

- ▶ Delivered in set with integrated nut and spring. Can reduce pv module installation time up to 15%
- ▶ Compatible with all Isotec profiles. Universal clamps work with framed pv modules between 30 - 45 mm height.



## Technical Data

ISOTRAP S	
Scope of application	Pitched roofs with trapezoidal sheet metal or sandwich panels
Compatible Solar Panel	L: 640mm - 1960mm W: 990mm - 1010mm H: 30mm - 40mm
Fixation	Self drilling screw or rivet
Dimensions	W: 78mm - H: 22mm - L: 300mm & 385mm
Material	Profile and clamps : Aluminium 6063-T66 Support : EPDM Fasteners : Stainless A2-70
Module Orientation	Landscape and Portrait

