

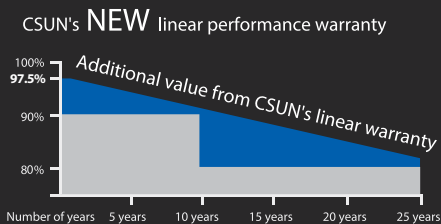
# Poly



## Powerguard Insurance Global Coverage

The power output shall not be less than 97.5% of the minimum power output stated in the product data sheet in the first year of the product's life cycle. The loss of power output shall not exceed 0.7% per year thereafter, ending with 80.7% in the 25th year.

■ CSUN ■ Standard warranty



## CSUN275-60P

Standard Solar Product

CSUN255-60P  
CSUN260-60P  
CSUN265-60P  
CSUN270-60P  
CSUN275-60P

### 16.94%

Module efficiency

### 275 W

Highest power output

### 10 years

Material & workmanship warranty

### 25 years

Linear power output warranty



Industry leading conversion efficiency



Positive tolerance offer



Passed salt mist & ammonia corrosion, blowing sand and hail testing



Certificated to withstand wind (2400 Pa) and snow load (5400 Pa)



Excellent performance under weak light condition



Good temperature coefficient enables better output in hot climates

- 5Z[ S Eg` Vdk 5a1 >fVzVWdY` d \_ S` gXUfgdV S` V VVhVb Z[YZ VVUWUk ea`Sd UWPe S` V \_ aVgVbfa fZW adV Xba\_ [fe bdaVgUf[a` UW fVbTSeW [ 5Z[ Sl Fgd Vkl EagfZ =adVb S` V H[V S\_ ž
- 8ag` VV [ \$"" & 5Z[ S Eg` Vdk [e i W^]` ai ` Xad [fe SVhS` UW ea`Sd UW^ fVUZ` a`aYkl dVSTWbdaVgUfcgSfkl S` V VVUWVfUgefa\_ VdeVhUW
- 3ea` WaX`VS[ Y BH WfVbdeVd 5Z[ S Eg` Vdk ZSe VVhVWV \_ adVfZS` &Z` 9I` aXe`Sd bdaVgUfefa dVWVf[SfUa\_ \_ VUStgfffk S` V aXZqV bdaVUfeS^Scag` V fZW adVz

\* Note: All specifications, warranties, certifications about module of „CSUN“ series also apply to that of „SST“.

All information and data are subject to change without notice.



www.csun-solar.com



All rights reserved by CSUN  
Version 3/2014-ENG

Electrical Characteristics at Standard Test Conditions (STC)

| Module Type                      | CSUN 275-60P | CSUN 270-60P | CSUN 265-60P | CSUN 260-60P | CSUN 255-60P |
|----------------------------------|--------------|--------------|--------------|--------------|--------------|
| Maximum Power - Pmpp (W)         | 275          | 270          | 265          | 260          | 255          |
| Positive Power Tolerance         | 0~3%         | 0~3%         | 0~3%         | 0~3%         | 0~3%         |
| Open Circuit Voltage - Voc (V)   | 38.0         | 37.9         | 37.7         | 37.6         | 37.5         |
| Short Circuit Current - Isc (A)  | 9.15         | 9.08         | 9.01         | 8.94         | 8.92         |
| Maximum Power Voltage - Vmpp (V) | 30.9         | 30.7         | 30.5         | 30.3         | 30.1         |
| Maximum Power Current - Impp (A) | 8.91         | 8.80         | 8.69         | 8.58         | 8.47         |
| Module Efficiency                | 16.94%       | 16.63%       | 16.32%       | 16.01%       | 15.70%       |

Electrical data relates to standard test conditions (STC) : irradiance 1000W /m<sup>2</sup> ; AM 1.5 ; cell temperature 25°C measuring uncertainty of power is within ±3%. Certified in accordance with IEC61215, IEC61730-1/2 and UL 1703

Electrical Characteristics at Normal Operating Cell Temperature (NOCT)

| Module Type                      | CSUN 275-60P | CSUN 270-60P | CSUN 265-60P | CSUN 260-60P | CSUN 255-60P |
|----------------------------------|--------------|--------------|--------------|--------------|--------------|
| Maximum Power - Pmpp (W)         | 211          | 198          | 195          | 192          | 188          |
| Maximum Power Voltage - Vmpp (V) | 28.4         | 28.3         | 28.2         | 28.1         | 28.0         |
| Maximum Power Current - Impp (A) | 7.10         | 7.01         | 6.92         | 6.82         | 6.72         |
| Open Circuit Voltage - Voc (V)   | 35.8         | 35.5         | 35.2         | 34.9         | 34.6         |
| Short Circuit Current - Isc (A)  | 7.35         | 7.30         | 7.25         | 7.20         | 7.16         |

Electrical data relates to normal operating cell temperature (NOCT): irradiance 800W /m<sup>2</sup>; wind speed 1 m/s ; cell temperature 45°C; ambient temperature 20°C measuring uncertainty of power is within ±3%.

Temperature Characteristics

|                                 |           |
|---------------------------------|-----------|
| Voltage Temperature Coefficient | -0.292%/K |
| Current Temperature Coefficient | +0.045%/K |
| Power Temperature Coefficient   | -0.408%/K |

Maximum Ratings

|                              |      |
|------------------------------|------|
| Maximum System Voltage (V)   | 1000 |
| Series Fuse Rating (A)       | 20   |
| Reverse Current Overload (A) | 27   |

Mechanical Characteristics

|                    |  |
|--------------------|--|
| Dimensions         | 1640 × 990 × 35 mm                                       |
| Weight             | 18.3 kg  |
| Frame              | Anodized aluminum profile                                |
| Front Glass        | White toughened safety glass, 3.2 mm                     |
| Cell Encapsulation | EVA (Ethylene-Vinyl-Acetate)                             |
| Back Sheet         | Composite film   |
| Cells              | 6x10 polycrystalline solar cells (3BB or 4BB 156 X156mm) |
| Junction Box       | Rated current ≥ 12A, IP ≥ 65, TUV&UL                     |
| Cable              | Length 900 mm, 1 × 4 mm <sup>2</sup>                     |
| Connector          | MC 4/ compatible with MC 4                               |

Packaging

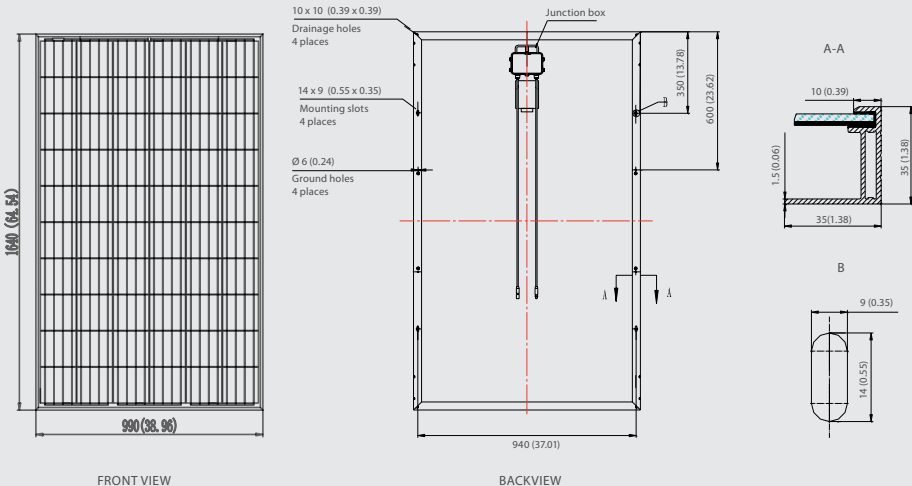
|                 |          |
|-----------------|----------|
| Container 20’   | 360 pcs. |
| Container 40’   | 840 pcs. |
| Container 40’HC | 910 pcs. |

System Design

|                   |  |
|-------------------|--|
| Temp. Range       | -40°C to + 85°C                                  |
| Hail              | max. diameter of 25mm with impact speed of 23m/s |
| Max. Capacity     | Snow 5400 Pa, wind 2400 Pa                       |
| Application Class | A  |
| Safety Class      | II   |

Dimensions

Note: mm (inch)



IV-Curves

