



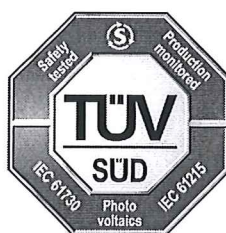
Product Service

CERTIFICATE

No. Z2 17 03 99081 001

Holder of Certificate: Tratek GmbH

 Sebastian-Kneipp-Str. 41
 60439 Frankfurt am Main
 GERMANY

Certification Mark:

Product:
Crystalline Silicon Terrestrial Photovoltaic (PV) Modules
[Poly-crystalline Silicon Photovoltaic (PV) Module]

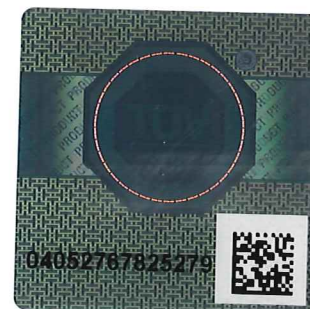
The product was tested on a voluntary basis and complies with the essential requirements. The certification mark shown above can be affixed on the product. It is not permitted to alter the certification mark in any way. In addition the certification holder must not transfer the certificate to third parties. See also notes overleaf.

Test report no.: 68180904516B

Valid until: 2020-03-01

Date, 2017-03-27

Page 1 of 3

 (Harry Shubo Zhang)




Product Service

CERTIFICATE**No. Z2 17 03 99081 001****Model(s):**

TK285P72, TK290P72, TK295P72, TK300P72,
 TK305P72, TK310P72, TK315P72, TK320P72,
 TK325P72, TK330P72, TK335P72, TK235P60,
 TK240P60, TK245P60, TK250P60, TK255P60,
 TK260P60, TK265P60, TK270P60, TK275P60,
 TK280P60, TK210P54, TK215P54, TK220P54,
 TK225P54, TK230P54, TK235P54, TK240P54,
 TK245P54, TK250P54, TK140P36, TK145P36,
 TK150P36, TK155P36, TK160P36, TK165P36,
 TK170P36

Parameters:

Application class: Class A
 Maximum system voltage: 1000 V d.c.
 Fire safety class: Class C
 Rated output power
 at STC: See page 3 for details.
 Test Laboratory: Yangzhou Opto-Electrical Products
 Testing Institute
 No. 10 West Kaifa Road, Yangzhou,
 225009 Jiangsu, P. R. China
 Construction: Framed, with Junction box,
 Cable and Connectors

**Tested
according to:**

IEC 61215(ed.2)
 EN 61215:2005
 IEC 61730-1(ed.1);am1;am2
 EN 61730-1:2007/A2:2013
 IEC 61730-2(ed.1);am1
 EN 61730-2:2007/A1:2012

**Production
Facility(ies):**

73925

Page 2 of 3



Product Service

C E R T I F I C A T E

No. Z2 17 03 99081 001

Model	Rated output power at STC
TK285P72, TK290P72, TK295P72, TK300P72, TK305P72, TK310P72, TK315P72, TK320P72, TK325P72, TK330P72, TK335P72	285 W, 290 W, 295 W, 300 W, 305 W, 310 W, 315 W, 320 W, 325 W, 330 W, 335 W
TK235P60, TK240P60, TK245P60, TK250P60, TK255P60, TK260P60, TK265P60, TK270P60, TK275P60, TK280P60	235 W, 240 W, 245 W, 250 W, 255 W, 260 W, 265 W, 270 W, 275 W, 280 W
TK210P54, TK215P54, TK220P54, TK225P54, TK230P54, TK235P54, TK240P54, TK245P54, TK250P54	210 W, 215 W, 220 W, 225 W, 230 W, 235 W, 240 W, 245 W, 250 W
TK140P36, TK145P36, TK150P36, TK155P36, TK160P36, TK165P36, TK170P36	140 W, 145 W, 150 W, 155 W, 160 W, 165 W, 170 W

Test report no.: 68180904516B

Date, 2017-03-27

Page 3 of 3