

**energize
the earth
buy the sun**

X SERIES

MICROMORPH 3

Electrical Data at STC *			X3-115	X3-120	X3-125	X3-130	X3-135	X3-140
Max. Electrical Output (-0/+5 W _p)	P _{max}	[W _p]	115	120	125	130	135	140
Voltage at P _{max}	U _{mpp}	[V]	121	122	124	125	127	128
Open Circuit Voltage	U _{oc}	[V]	161	163	165	166	168	169
Short Circuit Current	I _{sc}	[A]	1.12	1.15	1.17	1.20	1.23	1.25
Temperature Coefficient of P _{max}	γ	[%/°C]	-0.3	-0.3	-0.3	-0.3	-0.3	-0.3
Temperature Coefficient of U _{oc}	β	[%/°C]	-0.4	-0.4	-0.4	-0.4	-0.4	-0.4
Temperature Coefficient of I _{sc}	α	[%/°C]	+0.07	+0.07	+0.07	+0.07	+0.07	+0.07
Open Circuit Voltage, initial	U _{oc, initial}	[V]	163	165	166	168	170	171
Short Circuit Voltage, initial	I _{sc, initial}	[A]	1.14	1.17	1.20	1.22	1.25	1.28

* STC: irradiance of 1.000 W/m², spectral distribution corresponding to AM1.5, module temperature of 25 °C

Electrical Data at NOCT **			X3-115	X3-120	X3-125	X3-130	X3-135	X3-140
Max. Electrical Output	P _{max}	[W _p]	86	90	94	98	102	105
Voltage at P _{max}	U _{mpp}	[V]	110	111	113	114	116	117
Open Circuit Voltage	U _{oc}	[V]	147	148	150	151	153	154
Short Circuit Current	I _{sc}	[A]	0.91	0.93	0.95	0.97	1.00	1.01
Normal Operating Cell Temperature	NOCT	[°C]	45	45	45	45	45	45

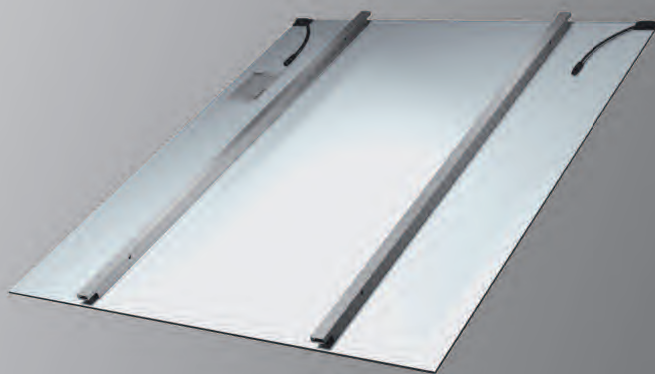
** Data are given for an irradiance of 800 W/m² and a wind speed of 1 m/s

Electrical Data at 200 W/m ² ***			X3-115	X3-120	X3-125	X3-130	X3-135	X3-140
Max. Electrical Output	P _{max}	[W _p]	23	24	25	26	27	28

*** Data are given for a spectral distribution corresponding to AM1.5 and a module temperature of 25 °C

Please read carefully our detailed installation manual before installing the photovoltaic modules. The instructions in the installation manual must always be observed (e.g. no grounding of minus pole in case of using transformerless inverters).

All electrical data are averages of production data and are subject to a measurement tolerance of +/- 5 %. Inventux does not issue any guarantee for the accuracy of this data for future production batches. All data may be subject to change without prior notice.



X SERIES
MICROMORPH

General Data

Module Type / Cells	Micromorph (a-Si/μc-Si) / 125 cells, monolithic series connection
Max. Reverse Current	4 A
Max. System Voltage	1,000 volt
Design Certification	IEC 61646
Electrical Classification	A (IEC 61730)
Product Warranty / Output Guarantee*	5 years / 10 years on 90 % of P_{max} * 25 years on 80 % of P_{max}

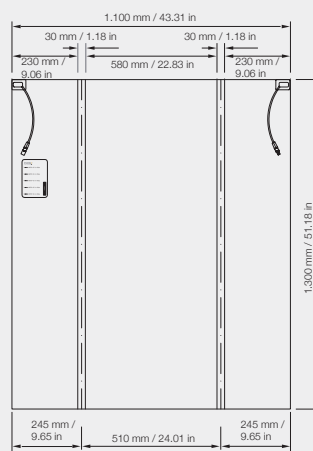
* Complete and most recent terms and conditions of warranty and guarantee shall prevail

Mechanical Data

Dimensions incl. Back Bars (W x H x D)	1,100 mm x 1,300 mm x 40 mm (43.31 in x 51.18 in x 1.57 in)
Surface area	1.43 m ² (15.39 sq ft)
Weight	26 kg (57.3 lbs)
Cables	2.5 mm ² / length 200 mm (7.87 in)
Connectors	LC3 (MC3 compatible), IP 68
Module Mounting	Stainless steel carrier profiles on back of module
Max. Angle of Inclination	45°
Max. Load	4,500 Pa

Packaging Details

Type	Outer packaging of corrugated cardboard on wooden pallet (IPPC)
Packaging Unit	22 modules
Dimensions (W x H x D)	1,200 mm x 1,500 mm x 800 mm (47.24 in x 59.05 in x 31.49 in)
Weight	600 kg (1,322 Pa)



Rear view, side view

Complete construction height
40 mm (1.57 in)

3SSolar Ackenhausen Consulting
Schoenstrasse 94
13086 Berlin (Germany)
Phone: +49 (30) 6129-7731
Fax: +49 (30) 6129-7732
Mail: wolf@3ssolar.com
Skype: wolfgang.ackenhause
URL: www.3ssolar.com