

# REC TWINPEAK SERIES

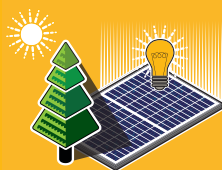
## PREMIUM SOLAR PANELS WITH SUPERIOR PERFORMANCE

REC TwinPeak Series solar panels feature an innovative design with high panel efficiency and power output, enabling customers to get the most out of the space used for the installation.

Combined with industry-leading product quality and the reliability of a strong and established European brand, REC TwinPeak panels are ideal for residential and commercial rooftops worldwide.



**MORE POWER  
OUTPUT PER M<sup>2</sup>**



**IMPROVED PERFORMANCE  
IN SHADED CONDITIONS**

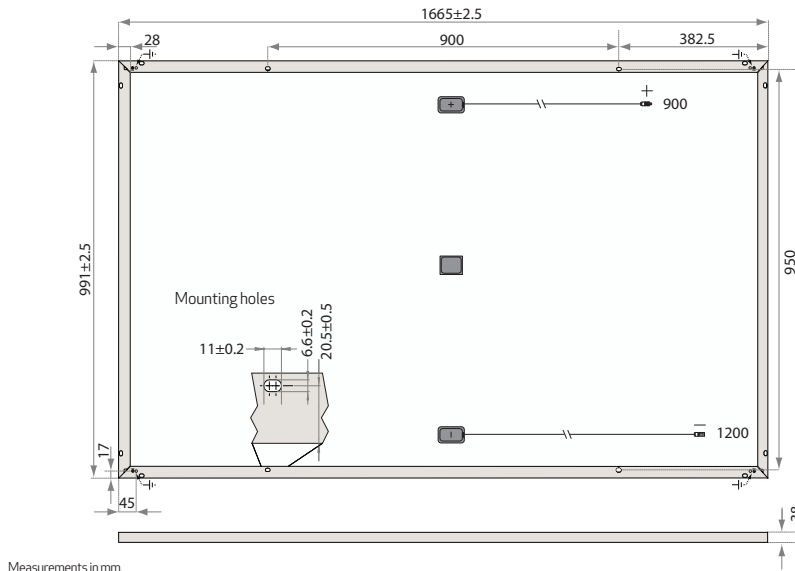


**100%  
PID FREE**



**REDUCES BALANCE OF  
SYSTEM COSTS**

# REC TWINPEAK SERIES



Measurements in mm.

ELECTRICAL DATA @ STC	REC265TP	REC270TP	REC275TP	REC280TP
Nominal Power - $P_{MPP}$ (Wp)	265	270	275	280
Watt Class Sorting - (W)	0/+5	0/+5	0/+5	0/+5
Nominal Power Voltage - $V_{MPP}$ (V)	31.1	31.2	31.4	31.9
Nominal Power Current - $I_{MPP}$ (A)	8.53	8.66	8.76	8.78
Open Circuit Voltage - $V_{OC}$ (V)	38.3	38.6	38.8	39.2
Short Circuit Current - $I_{SC}$ (A)	9.21	9.29	9.40	9.44
Panel Efficiency (%)	16.1	16.4	16.7	17.0

Analysed data demonstrates that 99.7% of modules produced have current and voltage tolerance of  $\pm 3\%$  from nominal values. Values at standard test conditions STC (airmass AM1.5, irradiance 1000 W/m<sup>2</sup>, cell temperature 25°C). At low irradiance of 200 W/m<sup>2</sup> (AM1.5 and cell temperature 25°C) at least 94% of the STC module efficiency will be achieved.

ELECTRICAL DATA @ NOCT	REC265TP	REC270TP	REC275TP	REC280TP
Nominal Power - $P_{MPP}$ (Wp)	195	198	202	205
Nominal Power Voltage - $V_{MPP}$ (V)	28.75	28.85	29.03	29.49
Nominal Power Current - $I_{MPP}$ (A)	6.77	6.87	6.95	6.97
Open Circuit Voltage - $V_{OC}$ (V)	35.25	35.53	35.71	36.08
Short Circuit Current - $I_{SC}$ (A)	7.32	7.38	7.47	7.50

Nominal operating cell temperature NOCT (800 W/m<sup>2</sup>, AM1.5, windspeed 1 m/s, ambient temperature 20°C).

## CERTIFICATIONS



IEC 61215, IEC 61730 & UL 1703  
IEC 61701 (Salt Mist - severity levels 1 & 6)

**takeaway**  
for an easy way  
take-e-way WEEE Compliant  
Recycling scheme

## WARRANTY

10 year product warranty  
25 year linear power output warranty  
(max. degradation in performance of 0.7% p.a.)  
See warranty conditions for further details.

17.0% EFFICIENCY

10 YEAR PRODUCT WARRANTY

25 YEAR LINEAR POWER OUTPUT WARRANTY

## TEMPERATURE RATINGS

Nominal operating cell temperature (NOCT)	44.6°C ( $\pm 2^\circ\text{C}$ )
Temperature coefficient of $P_{MPP}$	-0.39 %/°C
Temperature coefficient of $V_{OC}$	-0.31 %/°C
Temperature coefficient of $I_{SC}$	0.045 %/°C

## GENERAL DATA

Cell type:	120 REC HC multi-crystalline 6 strings of 20 cells (156 x 78 mm)
Glass:	3.2 mm solar glass with anti-reflective surface treatment
Back sheet:	Double layer highly resistant polyester
Frame:	Anodized aluminum (silver)
Junction box:	3-part with bypass diodes IP67 rated 4 mm <sup>2</sup> solar cable, 0.9 m + 1.2 m
Connectors:	Multi-Contact MC4 (4 mm <sup>2</sup> )
Origin:	Made in Singapore

## MAXIMUM RATINGS

Operational temperature:	-40 ... +85°C
Maximum system voltage:	1000 V
Maximum snow load:	550 kg/m <sup>2</sup> (5400 Pa)
Maximum wind load:	244 kg/m <sup>2</sup> (2400 Pa)
Max series fuse rating:	25 A
Max reverse current:	25 A

## MECHANICAL DATA

Dimensions:	1665 x 991 x 38 mm
Area:	1.65 m <sup>2</sup>
Weight:	18 kg

**Note!** Specifications subject to change without notice.

REC is the largest European brand of solar panels, with more than 15 million high-quality panels produced at the end of 2014. With integrated manufacturing from polysilicon to wafers, cells, panels and turnkey solar solutions, REC strives to help meet the world's growing energy needs. In partnership with a sales channel of distributors, installers, and EPCs, REC panels are installed globally. Founded in 1996, REC is a Bluestar Elkem company with headquarters in Norway and operational headquarters in Singapore. REC's 1,800 employees worldwide generated revenues of USD 680 million in 2014.



www.recgroup.com