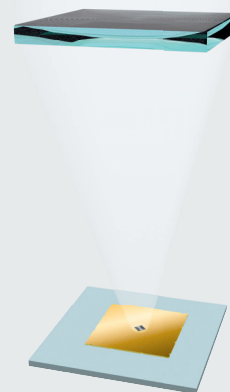


# Concentrix Technology

## Technical Information



Concentrix Solar Module  
CX-75



### Module Characteristics

Type	Concentrix Solar Module CX-75-III
Concentrator Type	Point focusing silicone on glass Fresnel lenses
Cell Units per Module	98
DC Power at 850 W/m <sup>2</sup> flashed	75 W
Voltage at MPP ( $V_{mpp}$ )	135 V
Current at MPP ( $I_{mpp}$ )	0.55 A
Open-circuit Voltage ( $V_{oc}$ )	150 V
Short-circuit Current ( $I_{sc}$ )	0.64 A
Dimension	828 mm x 428 mm x 102 mm
Weight	9.4 kg

### Solar Cell Characteristics

Cell Type	Triple junction solar cell
Cooling System	Passive cooling with copper
Cell Size	d = 3 mm
Max. Cell Temperature	45 K over ambient temperature
Temperature Coefficient	0.15 %/K

# Concentrix Technology

## Technical Information



### Concentrix Solar Inverter CX-6

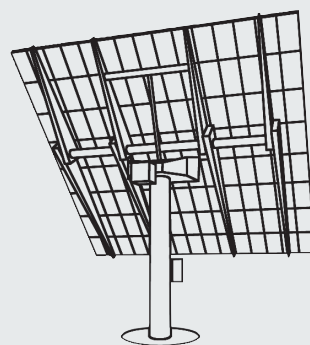
Type	Concentrix Solar Inverter CX-6
Nominal AC Power	6.9 kW
Grid Voltage	400 V 3 phase
Power Factor	~1
Max. Efficiency	96.5 %
European Efficiency	95.5 %
Circuit Design	Transformerless, grid tied
Operating Elements	AC switch
Connections	RJ45 external port, azimuth and elevation control
Ambient Temperature	-20°C to +50°C
Cooling	Free convection (no fan or blower)
Protection Class	IP54 according to EN 60529
Noise Emission	< 35 dB noiseless

# Concentrator Technology

## Technical Information



### Concentrix Solar System CX-P6



Type	Concentrix Solar System CX-P6
Tracking Type	Two-axis tracking
Tracking Accuracy	0.1°
Number of Modules	90 modules per system
Module Aperture Area	28.8 m <sup>2</sup>
Nominal AC Power	6.2 kW
Nominal AC Efficiency	25%
Nominal Conditions	Direct normal irradiance DNI of 850 W/m <sup>2</sup> and ambient temperature of 20°C
DC Open Circuit Voltage	900 V
Array Area	6.5 m x 5.5 m



Concentrix  
solar



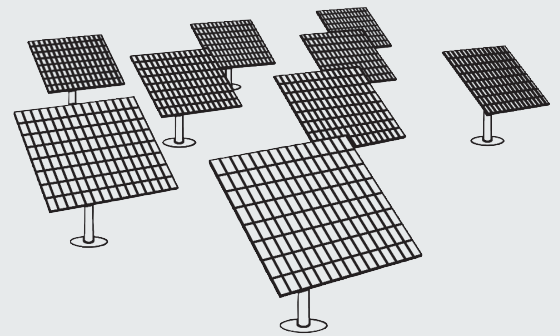
Concentrix Solar is a Division  
of the Soitec Group

# Concentrator Technology

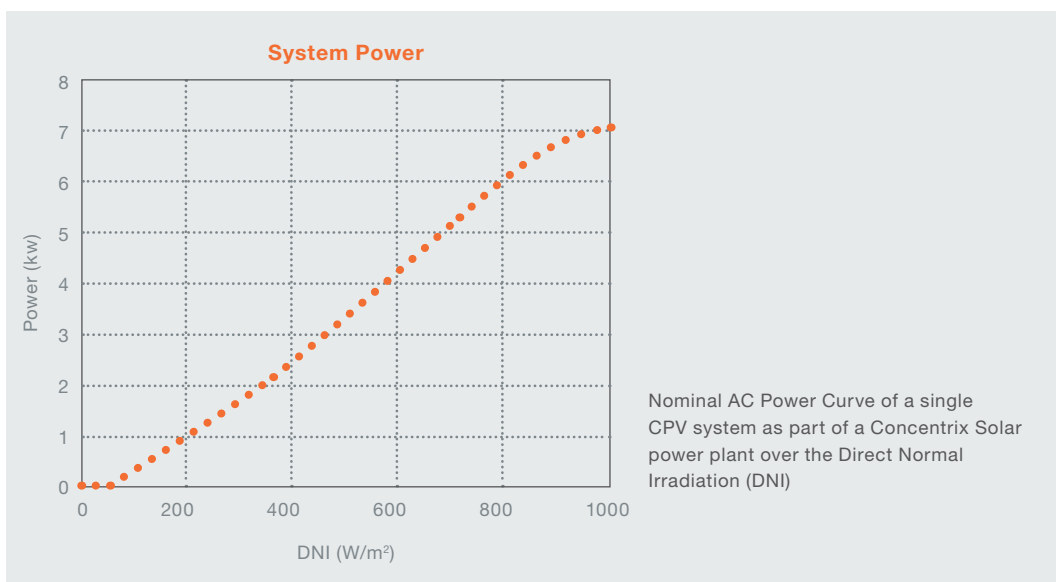
## Technical Information



### Concentrix Solar Power Plant Performance



- Concentrix Solar's CPV systems are especially suited for sites with high direct solar radiation, providing outstanding yields even at very high ambient temperatures
- For sites with an annual Direct Normal Irradiation (DNI) of 2500 kWh/m<sup>2</sup>a the electricity yield per installed Nominal AC Power is 2600 kWh/kW<sub>nom</sub>
- High-precision tracking system with high stability and virtually loss-free operation at wind speeds up to 15 m/s
- High availability by modularity of self-sufficient systems and sophisticated Control & Monitoring concept



**Concentrix**  
solar



Concentrix Solar is a Division  
of the Soitec Group